

OUTDOOR CATALOGUE #3

USING THE SAME TILE INSIDE YOUR HOME AND EXTENDING OUT INTO YOUR GARDEN CREATES A MODERN SEAMLESS FINISH. OUTDOOR TILES ARE RESISTANT TO ABSORBING WATER, SO THEY WON'T BE DAMAGED IF THE TEMPERATURE DROPS BELOW FREEZING. TESTED EXTENSIVELY FOR DURABILITY, ALL OUR TILES ARE HANDMADE IN THE UK OR SOURCED FROM ARTISAN SUPPLIERS INTERNATIONALLY.



Projects
Vivienda Unifamiliar Rocafort



The home features an overlap of two perpendicular blocks, each of them completely independently representing night and day areas. The lower block has been oriented so the gaps open up to the north and south, thus guaranteeing light inside any time of the day with adequate cross-ventilation. At the same time, the room on the first floor is oriented towards the east-west for ideal lighting at night.



Projects

Vivienda Unifamiliar Rocafort



Light is the main focus of this home's interior. The overlapping of both bodies creates a large porch that opens directly onto the pool as the heart of the home in summer. The shapes on the outside are treated with the utmost simplicity and clearness.





Projects

Vivienda Unifamiliar Grao

Used in various finishes, the wood imitation ceramic on the facade highlights the play of volumes. This material is used to clad the walls with ceramic slats protecting the gaps as well as for the home's interior floor and outdoor paving. Combined with the wood finish is an imitation stone ceramic on the outdoor paving with a nonslip finish and continuous surfaces on the terraces as well as loose pieces surrounding the grass ... Mainly due to its durability, quality and variety of finishes and formats. Given the evolution in recent years towards ceramic sheets which allows for formats never before considered, we value the environmentally-friendly and sustainable component as added value. Although getting it on the market today is a bit complicated, we have no doubts it will be essential in the near future.





A 2-storey house with landscaped exteriors and a swimming pool ideal for families. In this project, coherence, coordination and continuity were sought from the outset. For this reason, the Roadstone model has provided continuity to the interior and exterior spaces of the house.

Projects

Vivienda Unifamiliar en Málaga

*In this housing project, Viraje
Arquitectura now Ubiko has
managed to represent the
design, the actuality, the desire,
the attitude and the constant
effort to defend the architecture
in which they believe.*



Projects

Vivienda Unifamiliar en Barcelona



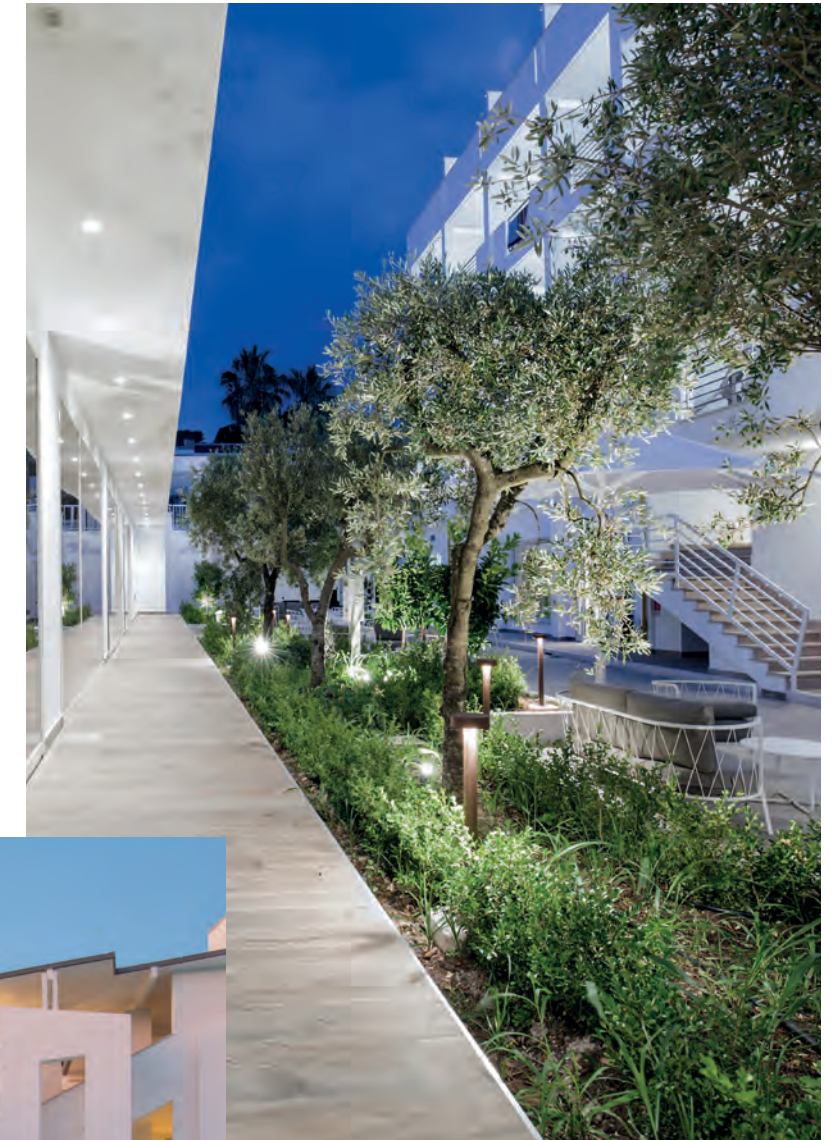
Projects

Vivienda Unifamiliar en Barcelona

In this project they have shown us a particular way of understanding the spaces so that you can spend more time with your loved ones in it and you can consciously take advantage of every corner. For interiors we opted for a porcelain wood model bohars that brings warmth to the different rooms and for exteriors one of the most demanded models at international level as is the findeza model.



Projects
Hotel Forte 2



Projects
Hotel Forte 2



EN

Hotel Forte 2 is a modern 4-star hotel complex in Gargano, Italy. Hotel Forte 2 is the perfect place to disconnect and relax. It has a pool with a solarium and a beach just a few steps away with lovely crystal-clear water and gentle fine sand.



Natural Matt

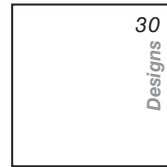
BELCASTEL

Pcb V2+ Rc

FORMATS



90x90 / 35"x35"
□ Adz M 33 ∇ 20

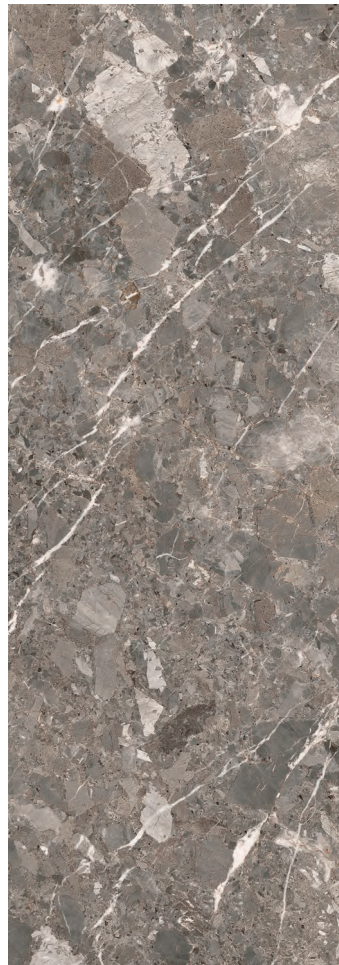


60,5x60,5 / 24"x24"
○ Adz M 27 ∇ 20



Silver
NCS S 2002 - Y50R

BELCASTEL SILVER 20 DESIGNS 90x90



Graphite
NCS S 5502Y

TECHNICAL SPECIFICATIONS



*Evitar el contacto con disoluciones ácidas. *Avoid any contact with acid solutions.
*Évitez tout contact avec des solutions acides.



Floor tile Belcastel Silver 90x90 (20MM)

BELCASTEL



Pearl
NCS S 0500-N



Silver
NCS S2002-G50Y



Damgray
NCS S 6005-R80B

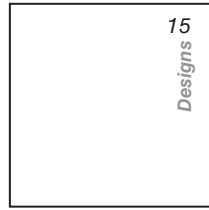
Adz Grip

CASTROVILLARI

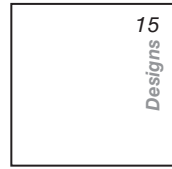
TXT R_c V2 NR



FORMATS

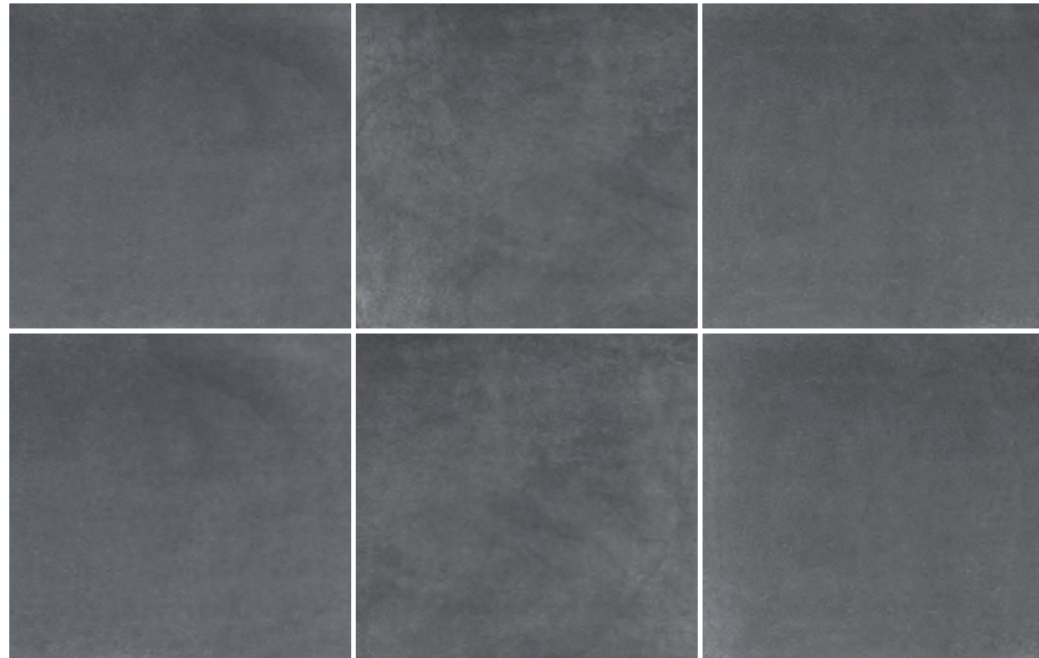


75,5x75,5 / 30"x30"
Adz M 31 ∇ 20



61x61 / 24"x24"
Adz M 27 ∇ 20

CASTROVILLARI DAMGRAY 15 DESIGNS 75,5x75,5



TECHNICAL SPECIFICATIONS



*Evitar el contacto con disoluciones ácidas. *Avoid any contact with acid solutions.
*Évitez tout contact avec des solutions acides.



Wall tile Caserta Silver 30x90 Dolce Silver 30x90 Amantea Silver 30x90. Floor tile Castrovillari Silver 75,5x75,5 (20MM)



White
NCS S 1000-N



Sand
NCS S 1005-Y50R



Silver
NCS S 0300-N



Gray
NCS S 5500-N

Adz Grip

COSMOPOLITA

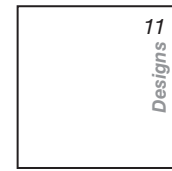
TXT R_c V2



FORMATS

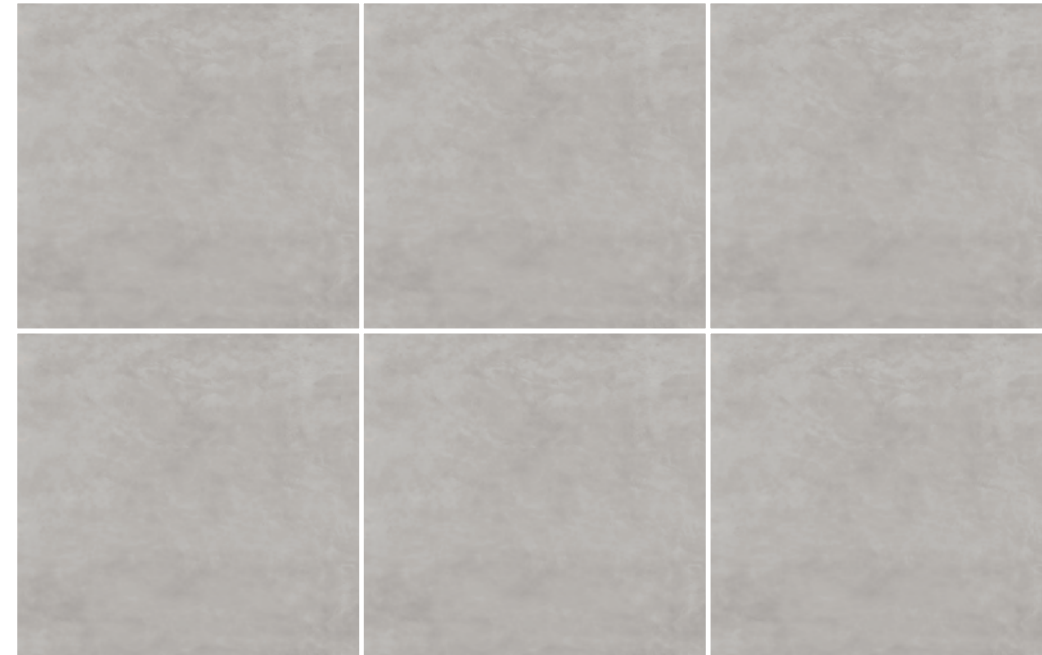


90x90 / 35"x35"
Adz M 33 ±20



60,5x60,5 / 23,8"x23,8"
Adz M 29 ±20

COSMOPOLITA SILVER 11 DESIGNS 60,5x60,5



TECHNICAL SPECIFICATIONS



*Evitar el contacto con disoluciones ácidas. *Avoid any contact with acid solutions.
*Évitez tout contact avec des solutions acides.



Floor tile Cosmopolita Silver 60,5x60,5 (20MM)

COSMOPOLITA



White
NCS S 1002-Y



Tan
NCS S 2002-Y



Silver
NCS S 2002 - Y50R



Gray
NCS S 2002-G

Adz Grip

DEVON

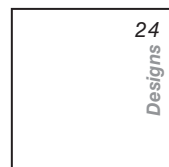
TXT R_c N_R V2



FORMATS



60x120 / 24"x48"
Adz M 33 ±20



61x61 / 24"x24"
Adz M 27 ±20

60,5x60,5 / 23,8"x23,8"
Adz M 29 ±20

DEVON SILVER 15 DESIGNS 75,5x75,5



TECHNICAL SPECIFICATIONS



*Evitar el contacto con disoluciones ácidas. *Avoid any contact with acid solutions.
*Évitez tout contact avec des solutions acides.



Wall tile Devon White 120x120. Floor tile Devon Silver 60x120 (20MM)



Silver
NCS S 1500-N



Tan
NCS S 2005-Y50R



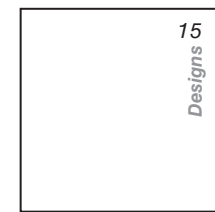
Gray
NCS S 3502-Y

Adz Grip

FIDENZA

TXT R_c NR V2

FORMATS



75,5x75,5 / 30"x30"
Adz M 31 \neq 20



61x61 / 24"x24"
Adz M 27 \neq 20

FIDENZA SILVER 15 DESIGNS 75,5x75,5



TECHNICAL SPECIFICATIONS



*Evitar el contacto con disoluciones ácidas. *Avoid any contact with acid solutions.
*Évitez tout contact avec des solutions acides.



Wall tile Fidenza Silver 37,5x75, Fidenza Silver 120x240. Floor tile Fidenza Silver 75,5x75,5 (20MM)



Haya
NCS S 1505-Y10R



Roble
NCS S 3010-Y30R



Olivo
NCS S 2005-Y20R

Adz Antislip

FOREVER

TXT R₁₁ V3

FORMATS



30x120,5 / 12"x48"

Adz M 33 \rightarrow 20

FOREVER HAYA 8 DESIGNS 30x120,5



TECHNICAL SPECIFICATIONS

CUMPLE	0,1%	110 / 130	35 / 45	RESISTE	RESISTE	RESISTE	UA*	C5	C3 / R11 ADZ DCOF >0,42

*Evitar el contacto con disoluciones ácidas. *Avoid any contact with acid solutions.
*Évitez tout contact avec des solutions acides.



Floor tileT Forever Haya 30x120,5 (20MM)

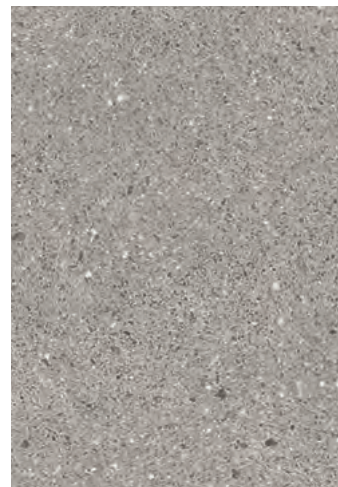
FOREVER



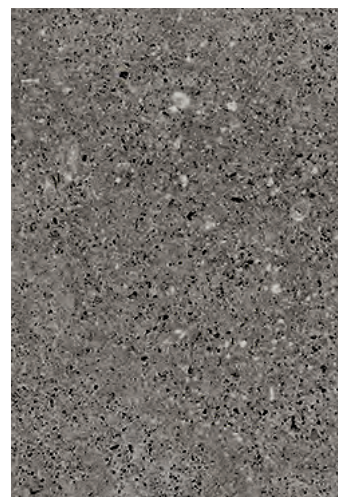
Pearl
NCS S 1002-Y



Greige
NCS S 3010-Y20R



Gray
NCS S 3502-Y



Graphite
NCS S 2002-G

Adz Antislip INTEGRA

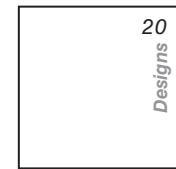
TXT R_c V2



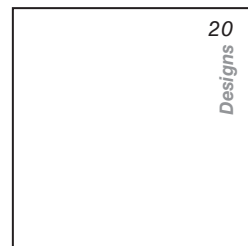
FORMATS



60x120 / 24"x48"
Adz M 33 \neq 20



60,5x60,5 / 23,8"x23,8"
Adz M 29 \neq 20



90x90 / 36"x36"
Adz M 33 \neq 20

INTEGRA PEARL 20 DESIGNS 60,5x60,5



TECHNICAL SPECIFICATIONS



*Evitar el contacto con disoluciones ácidas. *Avoid any contact with acid solutions.
*Évitez tout contact avec des solutions acides.



Floor tile Integra Greige 60,5x60,5 (20MM)

INTEGRA



Adz Antislip

MARSALA

TXT R_c V3

FORMATS



30x120,5 / 12"x48"

Adz M 33 ∇ 20



Umber
NCS S 3010-Y20R

MARSALA UMBER 8 DESIGNS 30x120,5



Gray
NCS S 4010-G90Y

TECHNICAL SPECIFICATIONS



*Evitar el contacto con disoluciones ácidas. *Avoid any contact with acid solutions.
*Évitez tout contact avec des solutions acides.



Floor tile Marsala Gray 30x120,5 (20MM)

MARSALA



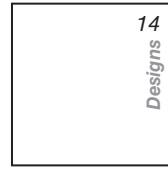
Adz Antislip
ORIGIN

TXT R_c N_R V2



FORMATS

Silver
NCS S 1500-N



61x61 / 24"x24"
○ Adz M 27 ∇ 20



30x120,5 / 12"x48"
□ Adz M 33 ∇ 20

Disponible en Silver y Sand
Available in Silver and Sand
Disponible dans Silver et Sand

Sand
NCS S 1005-Y20R

ORIGIN SAND 14 DESIGNS 30x120,5



Tan
NCS S 4020-Y30R

TECHNICAL SPECIFICATIONS

CUMPLE	0,1%	110 / 130	35 / 45	RESISTE	RESISTE	RESISTE	UA*	C5	C3 / R11 ADZ	DCOF >0,42

*Evitar el contacto con disoluciones ácidas. *Avoid any contact with acid solutions.
*Évitez tout contact avec des solutions acides.

Gray
NCS S 3500-N



Floor tile Origin Tan 30x120,5 (20MM)

ORIGIN



Sand
NCS S 1005-Y20R



Silver
NCS S 1500-N



Floor tile Origin Silver 61x61 (20MM)



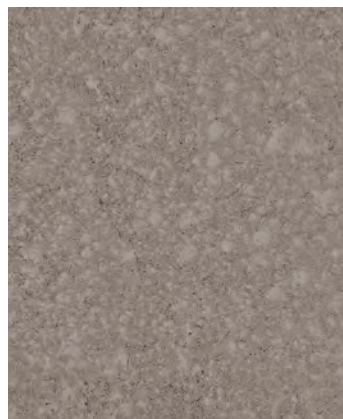
Pearl
NCS S 1002-G



Sand
NCS S 2005-T20R



Greige
NCS S 2005-Y50R



Silver
NCS S 0500-N



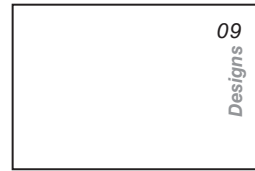
Gray
NCS S 4000-N

Adz Antislip PIERRE

TXT N_r V4



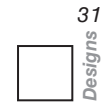
FORMATS



60x90 / 24"x36"
○ Adz M 33 \neq 20



20x30 / 8"x12"
○ Adz M 36 \neq 20



20x20 / 8"x8"
○ Adz M 36 \neq 20

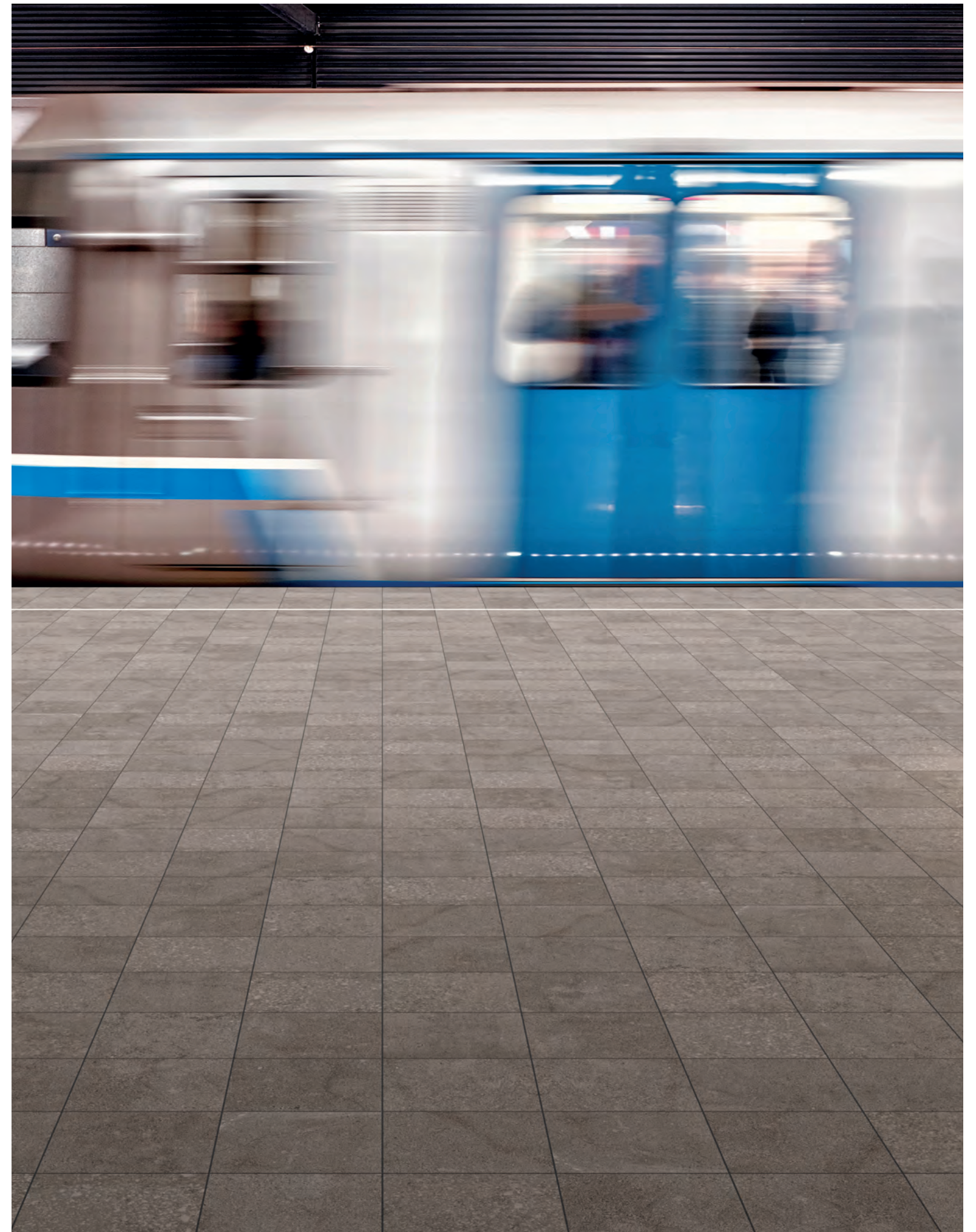


Floor tile: Pierre Silver 20x20

TECHNICAL SPECIFICATIONS



*Evitar el contacto con disoluciones ácidas. *Avoid any contact with acid solutions.
*Évitez tout contact avec des solutions acides.



Floor tile Pierre Silver 20x30

PIERRE



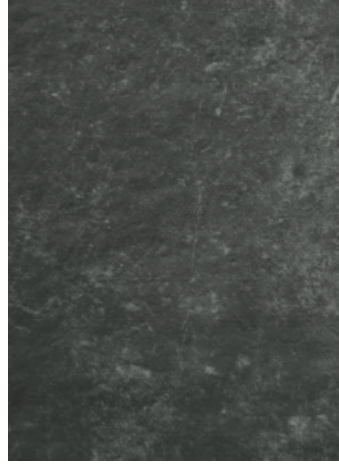
Sienna
NCS S 1505-Y30R



Umber
NCS S 2010-Y20R



Gray
NCS S 3005-G80Y



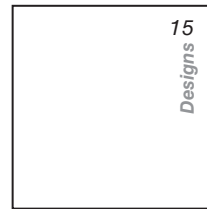
Black
NCS S 8500-N

Adz Antislip

TERRACINA

TXT R_c V3

FORMATS



75,5x75,5 / 30"x30"
Adz M 31 \neq 20



60x120 / 24"x48"
Adz M 33 \neq 20

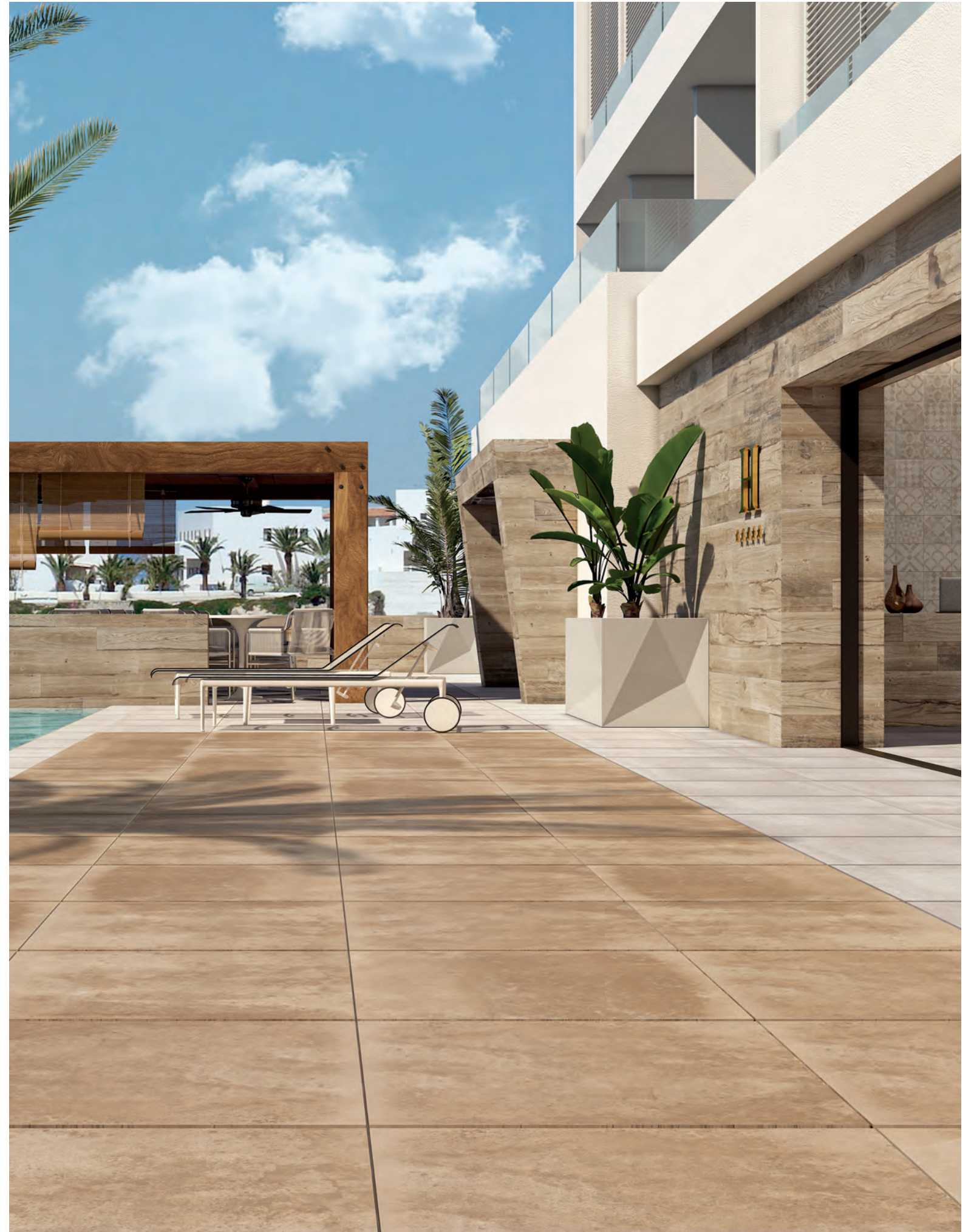
TERRACINA SIENA 15 DESIGNS 75,5x75,5



TECHNICAL SPECIFICATIONS



*Evitar el contacto con disoluciones ácidas. *Avoid any contact with acid solutions.
*Évitez tout contact avec des solutions acides.



Wall tile Marsala Umber 20x120 Dc Terracina White 22,3x22,3. Floor tile Terracina Sienna 75,5x75,5 (20MM)

TERRACINA



TERRACINA BLACK 15 DESIGNS 60x120

Floor tile Terracina Black 60x120 (20MM)

